



## PROPERTY MANAGEMENT

Our services touch a property's entire  
life-cycle and infrastructure.

**iwfm**  
Institute of Workplace  
and Facilities Management

[www.ipmfacilities.co.uk](http://www.ipmfacilities.co.uk)  
**0800 078 6279**



**ipm**  
**FACILITIES**  
"The Smart Choice"

## PROPERTY MANAGEMENT

24/7 Rapid Response  
**0800 078 6279**



SCAN ME



**ipm**  
**FACILITIES**  
"The Smart Choice"

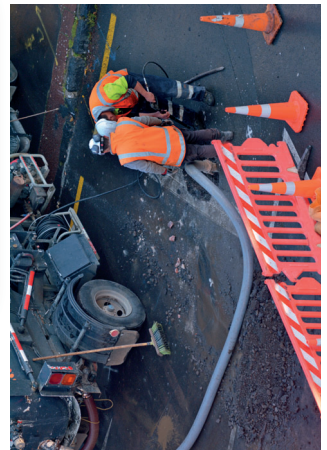
15 Highview Business Centre, Bordon, Hampshire, GU35 0AX  
[www.ipmfacilities.co.uk](http://www.ipmfacilities.co.uk) | 0800 078 6279 | [hello@ipmf.co.uk](mailto:hello@ipmf.co.uk)

# WHAT WE DO



## Services We Offer

- Access Control
- Brickwork & Paving
- Carpentry
- CCTV
- Cleaning (Office & Estate)
- Decoration
- Doors - Installation & Maintenance
- Drains & Gullies
- Electrical Testing & Installation
- Emergency Lighting
- Fencing
- Fire & Security Systems
- Glazing/Boarding Up
- Gutter Cleaning/Repairs
- Handyman Services
- Health & Safety Associated Works
- Insurance Inspections
- Jet Washing
- Lighting Maintenance
- Lightning Protection
- Locks
- M&E
- Painting & Decorating
- Pest Control
- Plumbing
- Pot Hole Repairs
- Property Maintenance
- Refurbishments & Fit-outs
- Road Markings & Anti-skid Surfacing
- Roller Shutters
- Roofing/Safety Rails
- Security Services
- Signage
- Waste Management
- Window Cleaning



Our expertise and breadth of services allows our clients to save money, improve on energy performance and increase efficiencies across the board. We have been doing this now for more than 30 years and work closely with a range of businesses and companies, from start-ups to multi-national blue chips. We are your strategic partner, when it comes to both reactive works as well as more general maintenance. There isn't anything IPM can't do.